



EPILOG ZING 16 LASER

Instructions

SUMMARY

A short instruction on how to use the Epilog Zing 16 Laser.

Contents

Material speed and Power 2

How to turn on an calibrate the laser 3

Zing Laser Print Instructions..... 7

Material speed and Power

Acrylic:

Thickness	2	3	4	5	6	7	8	9	10	11	12
Vector											
Power		100			100				100		
Speed		15			12				5		
Raster											
Power	100	100	100	100	100	100	100	100	100	100	100
Speed	60	60	60	60	60	60	60	60	60	60	60

Plywood:

Thickness	2	3	4	5	6	7	8	9	10	11	12
Vector											
Power											
Speed											
Raster											
Power											
Speed											

How to turn on and calibrate the laser

1. Turn on pump



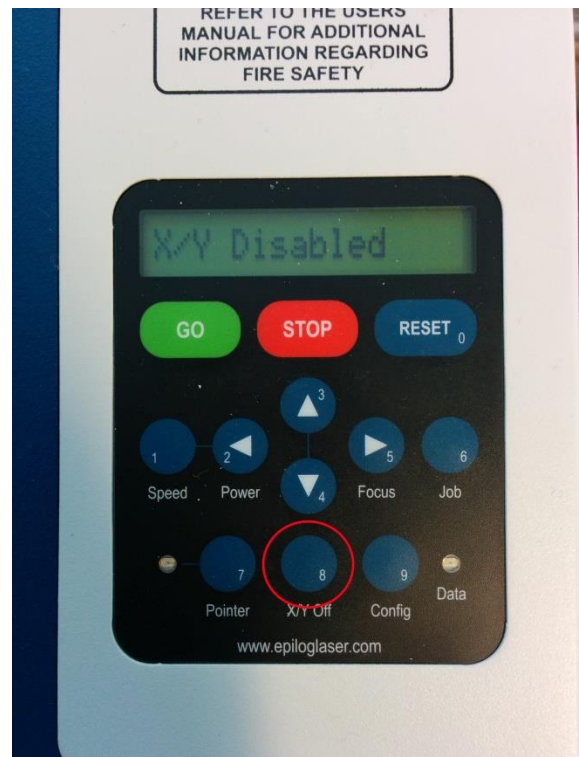
3. Turn on Laser



2. Turn on filter (red)

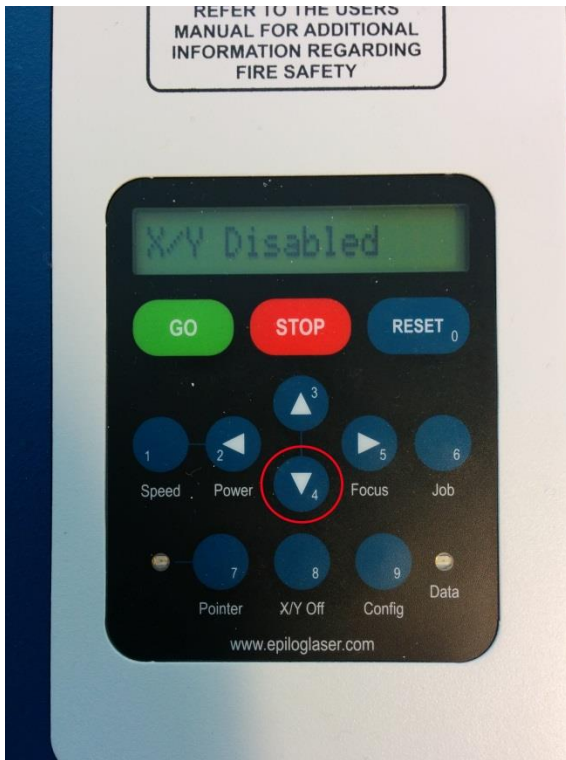


4. turn off X/Y axes

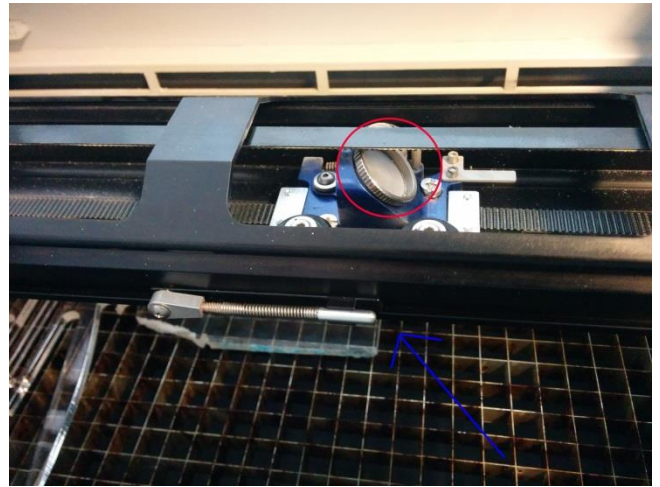


Make sure the lower light ok sign (in blue) is the only one lit.

5. Lower bed until bottom (starts shaking).

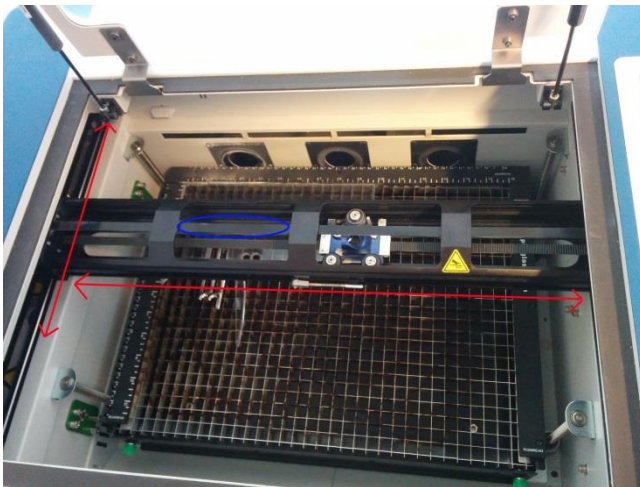


7. Unscrew and check mirror (red) for spots and residue. Clean with special cloth and lens cleaner if necessary. Screw back on.



Then unscrew and check lens under bar (blue) for residue. Clean with special cloth and lens cleaner if necessary. Screw back on.

6. Check axes



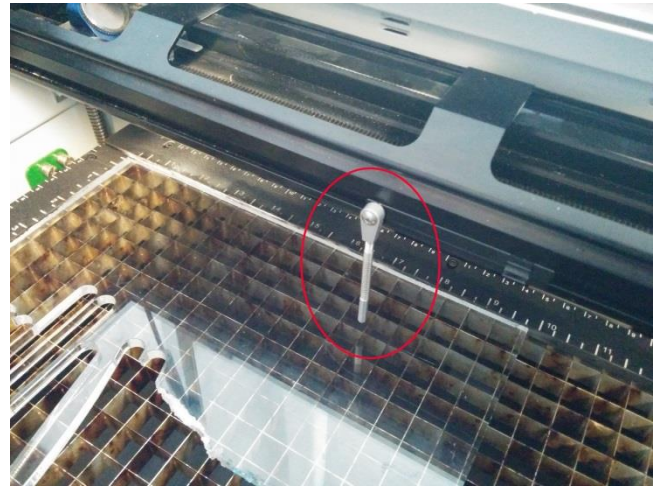
Pull (blue) band to check X-axis, and the entire bar for Y-axis.



8. Raise bed until focus pin can be dropped from slot position.



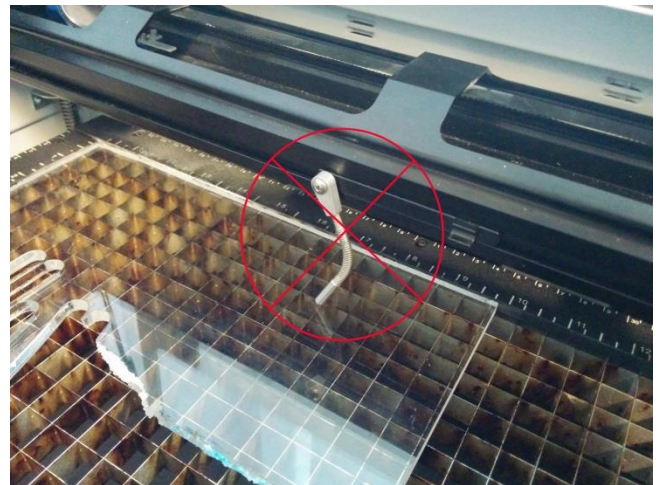
Lower bed until focus pin can almost move freely over surface like this.



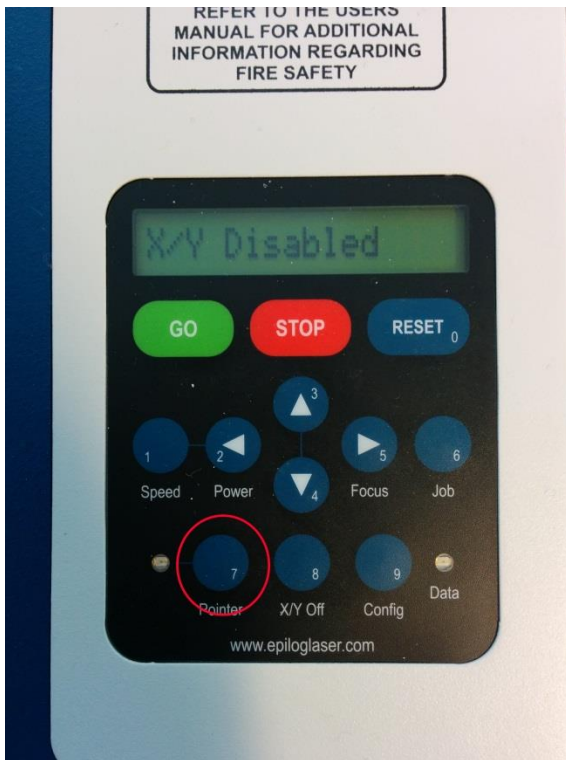
To calibration position.



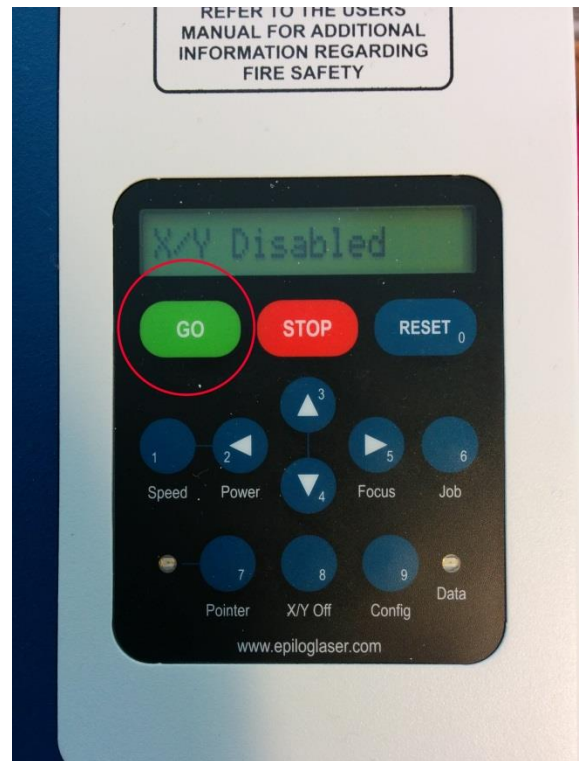
Do not leave the focus pin like above and raise bed so focus pin is squashed like this.



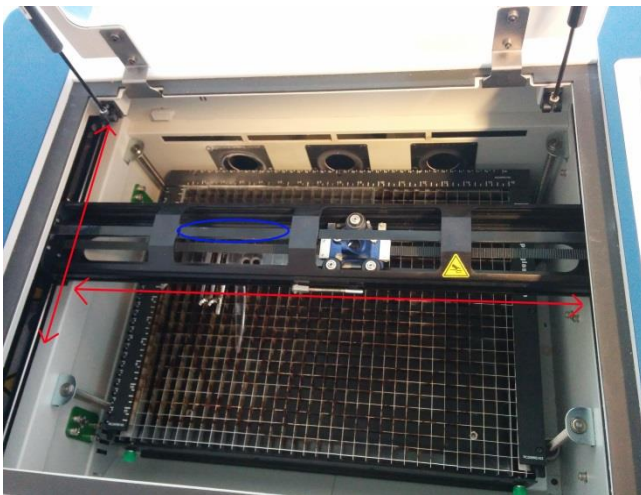
9. Turn on laser pointer.



10. Push Go button to lock X/Y-axis.



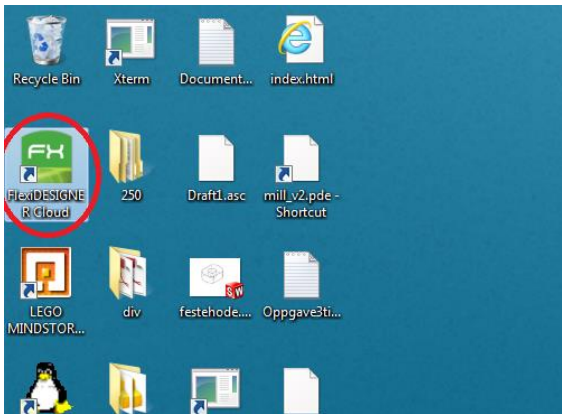
Move X/Y axis with bar and elastic band until pointer in home/zero position.



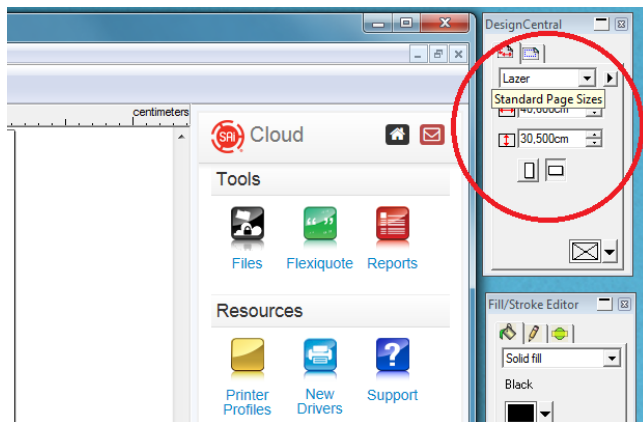
11. Ready for print. See Print Instructions.

Print Instructions

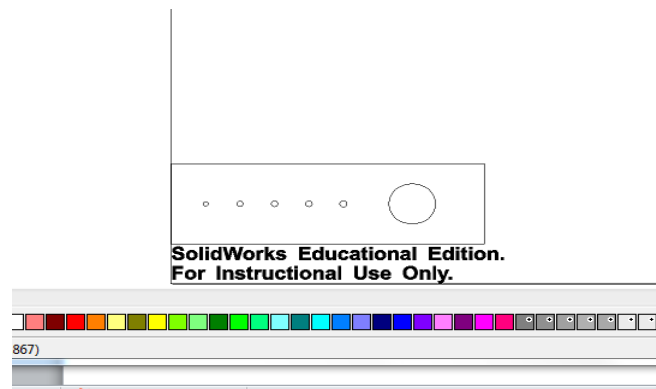
1. Open Flexi Designer



2. Change document size to these settings(406mm x 305mm)

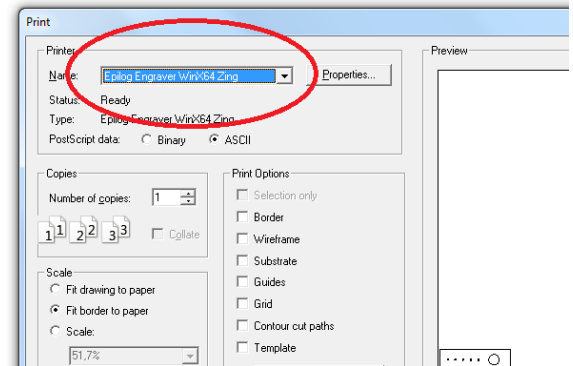


3. DXF files can be opened directly and you can delete text from DXF conversion in SolidWorks

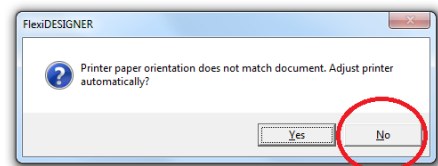


4. Press print when you have something you want to cut, but decline automatic print orientation.

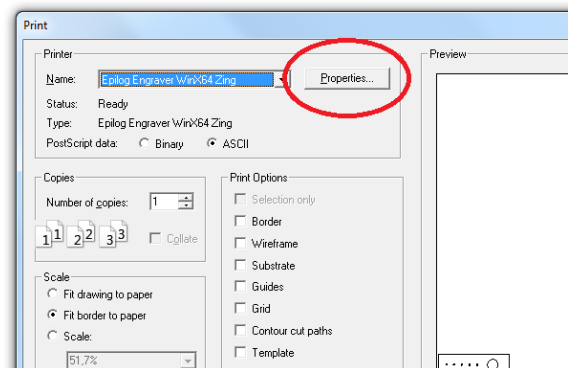
5. Change printer to "Epilog Engraver WinX64 Zing".



Decline another automatic print orientation after selecting correct printer.



6. Select properties



7. Change Epilog Piece Size (406 x 305) and adjust power and speed for your material.

